



VIBRATORY BOWL FEEDERS

ADMV's extensive experience with feeding systems has led to the development of a high quality vibratory bowl feeders for the increasing out-feed rate requirements of the market.

MAIN ASSETS:

- Out-feed rate: 10 to 150 parts / minute
- Selection and orientation of parts from bulk
- Capability for multiple formats
- Easy change over parts
- Out-feed onto vibratory tracks
- CW or ACW base rotation
- Vibratory hopper, belt hopper, hopper elevator
- Optional sound enclosure
- Optional bowl coating according to products fed
- Belt speed is steady or adjustable by inverter

ENDLESS APPLICATION POSSIBILITIES:

Cosmetics:



Pharmaceuticals:

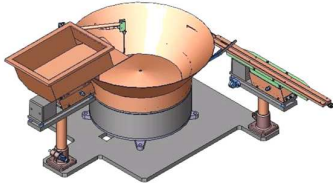


Others:

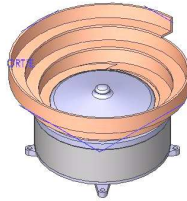


Bowls

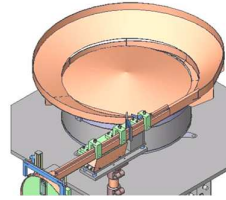
Conical



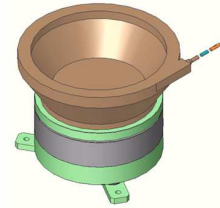
Spiral



Flat spiral



Composite



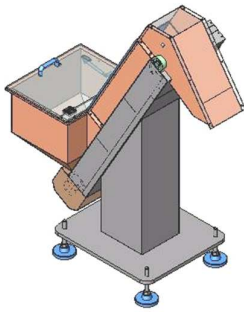
Types		Diameters (in mm)
Stainless steel / steel conical bowls	CS	300 – 350 – 450 – 650 - 980
Stainless steel / steel spiral bowls	HS	325 – 420 – 650 – 835 – 890 - 1090
Aluminium spiral bowls	HA	410 - 650
Stainless steel / steel flat spiral bowls	CHS	540 – 786 – 910 – 1020
Composite carved bowls		150 – 200 – 250 – 300 – 350 - 400

Vibratory Bases (cw or acw rotation)

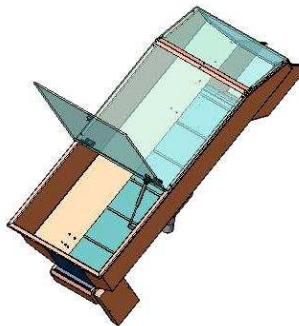
Stationary bottom	V2M 200	V2M 250	V2M 300	V2M 450	V2M600
Rotary bottom			V2M 300 FT	V2M 450 FT	

Hoppers

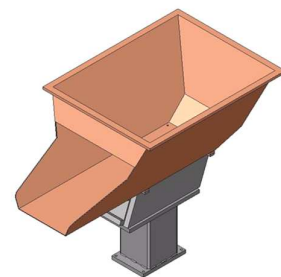
Hopper Elevator



Belt Hopper



Vibratory Hopper



Types	Stainless steel (in dm3)				Steel (in dm3)			
Hopper Elevator	60	100	160	270	60	100	160	270
Belt Hopper	40	60	80	120	100	150	200	500
Vibratory Hopper	10	20	30	60	10	20	30	60

Specifications:

230 – 400 VAC \pm 15% – 50 Hz – (others on request)

Frame: Colour RAL 9006 (others on request)

These data may be changed without any notice by ADMV. 02-2021-A

ADMV

ZA Les Triboullières, F-38460 Cremieu / France

Phone +33 (0)474904366 / Fax +33 (0)4749046677

www.admv.fr - commercial.fr2@flexlink.com - sav.fr2@flexlink.com